



B.K. BIRLA CENTRE FOR EDUCATION

SARALA BIRLA GROUP OF SCHOOLS
A CBSE DAY-CUM-BOYS' RESIDENTIAL SCHOOL



TERM-1 EXAMINATION (2025-26)

SOCIAL SCIENCE

MARKING SCHEME

Class: V

Date: 12/09/2025

Admission no:

Time: 3Hrs.

Max Marks: 80

Roll no:

SECTION-A

Choose the correct option

1. Which means of communication can help us quickly send messages to multiple people in an emergency? 1
a. **Radio** b. Postcard c. Letter d. None of the above
2. What is the movement of Earth on its axis called? 1
a. Revolution b. **Rotation** c. orbit d. Equator
3. The 0° latitude is known as _____. 1
a. Prime Meridian b. **Equator** c. Tropic of Cancer d. Arctic Circle
4. The water cycle involves processes such as evaporation, condensation, precipitation, and _____. 1
a. Respiration b. **Collection** c. Sea water d. Photosynthesis
5. Which region has a hot and heavy rain climate throughout the year? 1
a. The temperate grasslands b. The tundra
c. **The equatorial region** d. The hot deserts
6. What is the name of the permanently frozen soil found under the top layer of melted snow? 1
a. Ice cap b. The tundra c. **Permafrost** d. Snowfield
7. What is the climate of the Tundra? 1
a. Hot b. very hot c. **Extremely cold** d. Neither hot nor cold.
8. State true or false. 0.5X6=3
a. The equator divides Earth into the Eastern and Western Hemispheres. (F)
b. The South Pole is the northernmost point of Earth's axis. (F)
c. Earth takes 24 hours to complete one rotation. (T)
d. Cacti have thick stems and spines to store water. (T)
e. Air pollution is caused by loud noises from construction work. (F)
f. The English East India Company came to India in the year 1856. (F)

9. Match the following:

0.5X4=2

A

- a. Water pollution iv
- b. Rani Lakshmibai iii
- c. Tropic of Cancer i
- d. Grassland ii

B

- i. Northern Hemisphere
- ii. Breadbasket of the world
- iii. Jhansi
- iv. oil spill

10. Name the following

- a. Type of water transport that helps transport people and goods through seas and ocean.

Oceanic waterway

1

- b. Type of pollution increases due to burning fossil fuels.- Air pollution

1

- c. The movement of the Earth around the Sun.- Revolution

1

11. Look at the picture and answer the questions.

a.



- i) What is happening in the picture?

1

In the picture, people are buying British cotton cloth from a shop.

- ii) Why do you think people are buying cotton?

1

People are buying British cotton because it was cheaper than Indian cotton cloth.

b.



- i) Which Domains seen in the picture?

Atmosphere, Lithosphere and biosphere domains seen in the picture.

1

- ii) Do you think the domains shown here are safe for living things? Why?

1

No, the domains shown here are not safe for living things because these are polluted.

SECTION-B

Answer the questions.

12. Differentiate between latitudes and longitudes.

3

Latitude refers to the horizontal lines that run parallel to the Equator. There are 180 latitudes. They measure the distance north or south of the Equator.

Longitude refers to the vertical lines that run from the North Pole to the South Pole. There are 360 longitudes. Longitudes measure the angular distance east (E) or west (W) of the Prime Meridian

13. Write different types of temperature zones and its climate. 3
Torrid Zone- Generally high throughout the year. This zone experiences warm to hot temperatures year-round with little variation.
Temperate Zone - Moderate temperatures with seasonal variations.
Frigid Zone - Very low temperatures year-round.
14. How does rotation cause day and night? 3
The rotation of the Earth causes day and night through the movement of the Earth around its axis. Day occurs in the part of the Earth that is facing the Sun, while the night happens on the side of the Earth that is turned away from the Sun.
15. What is the atmosphere? Why is it important for life? 3
The atmosphere is a layer of gases that surrounds the Earth. It's made up of air that we breathe, and it extends hundreds of kilometers above the Earth's surface that provides oxygen, keeps us warm, protects us from the Sun's harmful rays, and helps the water cycle and weather. It's vital for life on Earth to exist.
16. Describe the life of people in the hot desert. 3
People in hot deserts live in tents or mud houses. They move from place to place to find water and food. They raise animals like sheep and goats and sell goods like dates.
17. How does air pollution harm living things? 3
Pollution is when harmful things enter our environment and make it dirty or unsafe. Air pollution can make people sick. It can cause breathing problems, cough, eye irritation, and headaches.
18. Why were the weavers not happy with the British? 3
The weavers were not happy with the British because the British began to sell cheaper cloth made by machines. This made it hard for Indian weavers to sell their cloth, and many lost their jobs.

OR

Why did the British make changes for forest communities, and what changes did they make?

Many forest communities in India depended on forests for food and shelter. The British wanted to make money from the forests. So, they made laws that stopped these people from using the resources in the forests, making their lives very difficult

19. Rahul is super excited—he's planning a trip to three different places, and he needs your help to figure out the best modes of transport for each!
Can you identify the most suitable way for him to travel to each place?
- i. Rahul is flying to a city in another country. What should he take? 1
Air transport
- ii. Next, he's heading to a hill station nearby for some cool mountain air. How should he get there? **Road transport** 1
- iii. Finally, he wants to visit his grandmother's village across the river. What will help him cross the water? **Water transport** 1

SECTION-C

Long answer questions.

20. How does personal communication differ from mass communication? State the difference between the two by providing an example of each. 4

Personal communication is sharing information between two people. It's one-on-one or with a small group of people.

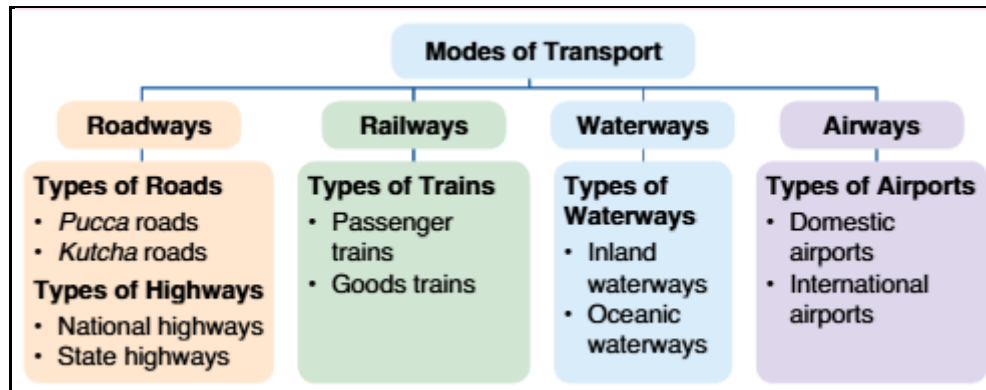
Examples- Letter, telephone

Mass communication is sharing information with many people at the same time. Information is shared with a lot of people at once. It's meant for a big audience.

Examples- Newspaper, magazines

OR

Create a colourful flowchart to explain the different modes of transport. Use simple drawings to show how they are grouped and examples of each.



21. What is the equator? What are two parts that it divides Earth into? 4

The Equator is an imaginary line that circles the Earth horizontally, right in the middle.

The Equator divides the Earth into two equal halves.

The Two Parts the Equator Divides Earth Into:.

- 1. Northern Hemisphere**
- 2. Southern Hemisphere**

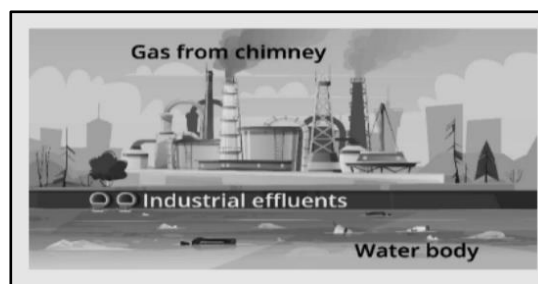
22. What is soil pollution? Write two ways in which it affects the environment? 4

Soil pollution is caused by throwing waste on the ground, using strong chemicals on farms, and releasing factory waste into the soil. Plastics, or waste, get mixed into the soil. It affects the environment by harming plants and animals that live in the soil, and by making our food unsafe to eat.

Harm to Plants: Polluted soil can stop plants from growing properly, making it hard for them to get the nutrients and water they need.

Harm to Animals: Animals that live in or near the soil, like insects or small animals, can get sick from eating or living in polluted soil.

OR



Based on the picture given, describe how the environment is being harmed.

Air Pollution – Dirty air from smoke and gases harms health and plants.

Water Pollution – Waste in water kills fish and makes water unsafe.

Soil Pollution – Chemicals make soil poor for growing plants.

Noise Pollution – Loud sounds disturb people and animals.

23. What are the problems faced by soldiers during British rule?

4

The British allowed many Indians to join their armies as soldiers, but paid them less than what British soldiers were paid. Indians soldiers were treated very badly. Soldiers had to work in extreme heat and cold. They often lacked proper clothing, food, and shelter. They had to follow strict British orders and could not speak out against them. They were often forced to follow rules that went against their culture and religion. Indian soldiers had no freedom to express their opinions or protest against bad treatment.

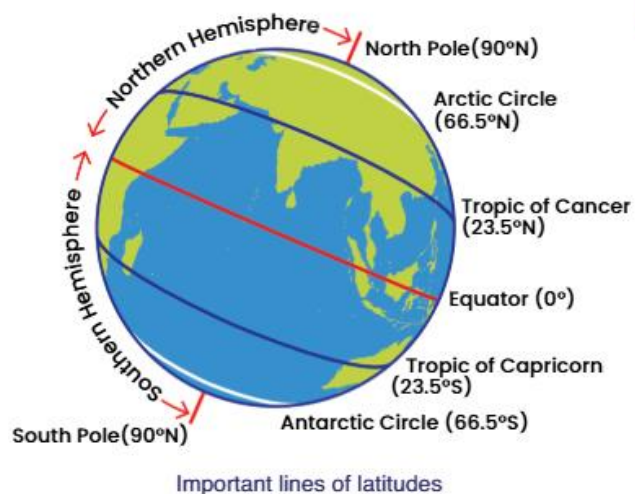
SECTION-D

24. Draw a neat and labelled diagram of the Earth showing the important lines of latitude. Explain the significance of these latitudes.

5

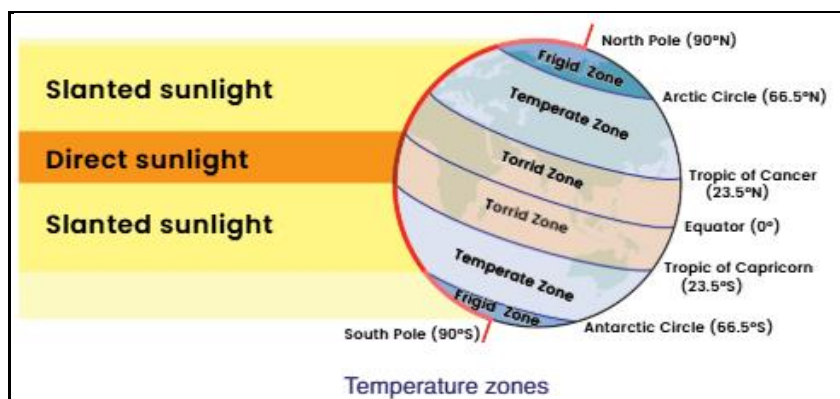
There are five important lines of latitude.

- Arctic Circle (66.5°N)
- Tropic of Cancer (23.5°N)
- Equator (0°)
- Tropic of Capricorn (23.5°S)
- Antarctic Circle (66.5°S)



OR

Draw a neat and labelled diagram of the Earth showing the three main temperature zones. Explain each temperature zone in brief.



SECTION-E

Case Study:

25. It was Riya's birthday. Her cousin Aarav came from another state by train. Meena sent a video

message to wish her. In the evening, Riya's father took everyone by car to a lake. The town also had bicycles, buses, and a ferry boat to cross the river.

Answer the questions:

1. Which mode of transport did Aarav use? 1
2. What type of communication did Meena use? 1
3. Why might ferry boats be useful in Riya's town? What type of transport is this? 2

Ans-

- 1. Aarav used a train as his mode of transport.**
- 2. Meena used a video message as her mode of communication.**
- 3. Ferry boats are useful in Riya's town for crossing the river where there is no bridge. This is a water transport.**

26. Rohan went on a school trip to Eco Park, where he observed the beauty of nature all around. He saw a blue lake nestled near green hills. Birds were flying freely in the sky, and he noticed fish swimming in the clear water.

Based on Rohan's experience, answer the following questions:

1. The green hills that Rohan saw are part of which domain of the Earth? 1
2. The fish swimming in the lake belong to which domain? 1
3. When birds fly in the sky, which two domains are involved? 2

- 1. Hills belong to the lithosphere (land domain).**
- 2. Fish in the lake belong to the hydrosphere (water domain).**
- 3. Two domains involved when birds fly in the sky are the atmosphere (air) and the biosphere (living things).**

27. In Sunny Village, people throw garbage into the river, and many trees have been cut down. Some children start planting new trees near the school.

Answer the questions

1. Name one way people are harming the Earth in Sunny Village. 1
2. How are the children helping the Earth? 1
3. Suggest any two ways to keep the village clean and green. 2

Answers:

- 1. Throwing garbage into the river is one way people are harming the Earth in Sunny Village.**
- 2. The children are helping the Earth by planting new trees near the school.**
- 3. One more way to keep the village clean and green is by setting up dustbins and avoiding plastic waste.**

28. The British initially arrived in India in 1608 with the purpose of trade. Over time, their ambitions grew. A major turning point came with their victory in the Battle of Plassey in 1757, after which they started establishing control over Indian territories. Finally, in 1858, following the events of the Revolt of 1857, India officially came under the British Crown, marking the beginning of direct British rule.

Based on the passage above, answer the following questions:

1. In which year did the British first arrive in India, and why? 1
2. Which battle marked the beginning of British rule in India? 1
3. What significant change took place in **1858** regarding British control in India? 2

Ans-

- 1. The British first came to India in 1608.**
- 2. Their rule began after the Battle of Plassey in 1757.**
- 3. In 1858, India came under the rule of the British Crown.**